

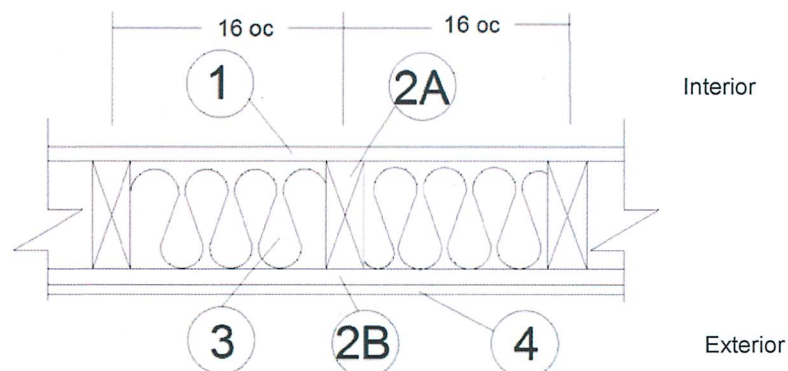
Fire Retardant Chemical Technologies LLC

Design No. FRCT/FRWT 60-01

Fire Retardant Wood

FlameTech™ Lumber and Plywood

ASTM E119

Rating: 1 Hour Load Bearing (Interior only, 2015 NDS - F_c 0.96 for FRWT)

1. **GYPSUM BOARD (Interior):** One layer Type C USG Firecode® C Core Type X, complying with ASTM C1396 or equivalent, min. 5/8 in. thick, 4 ft. wide applied vertically, fastened to framing. Joints covered with paper tape and joint compound. Fasteners covered with joint compound. Min. #6 × 1-5/8 in. long Type S or W screws, spaced max. 6 in. on center (oc).

2. **CERTIFIED MANUFACTURER:** Fire Retardant Chemical Technologies LLC.

CERTIFIED PRODUCT: FlameTech™**2A. CERTIFIED MODEL:** FlameTech Lumber

FlameTech Lumber is min. 2×4 in. nominal wood studs, spaced max. 16 in. oc, double top plates and single bottom plate fastened together with 16d common nails.

2B. CERTIFIED MODEL (Exterior): FlameTech Plywood

FlameTech Plywood, min. 15/32 in. thick, is applied vertically over the specified framing with min. 2-3/8 in. long, 0.113 in. diameter nails, spaced max. 8 in. oc around the perimeter and max. 12 in. oc in the field. Horizontal joints must be blocked.

3. **INSULATION:** Fiberglass batt insulation, min. 3-1/2 in. thick, R-13 friction fit between the studs. If 2×6 in. nominal wood studs are used, fiberglass batt insulation shall be min. 5-1/2 in. thick.

4. **EXTERIOR FACINGS (Optional):** Materials installed in accordance with manufacturer's installation instructions:

- Masonry brick veneer or concrete
- Portland cement or synthetic stucco systems with self-furring metal lath or adhesive base coat
- Hardboard, wood structural panel, plywood, or fiber-cement siding
- Metal siding
- Vinyl siding – exterior plastic

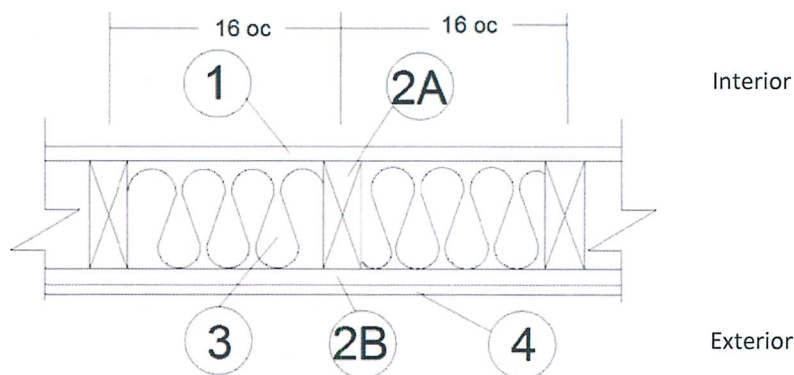
Fire Retardant Chemical Technologies LLC

Design No. FRCT/FRWT 60-02

Fire Retardant Wood

FlameTech™ Lumber and Plywood

ASTM E119

Rating: 1 Hour Load Bearing (Rated from Interior and Exterior, 2015 NDS - F_c 0.96 for FRWT)

1. **GYPSUM BOARD (Interior):** One layer Firecode® C Core, complying with ASTM C1396, or equivalent, min. 5/8 in. thick, 4 ft. wide applied vertically, fastened to framing. Joints covered with paper tape and joint compound. Fasteners covered with joint compound. Min. #6 × 1-5/8 in. long Type S or W screws, spaced max. 6 in. on center (oc).

2. **CERTIFIED MANUFACTURER:** Fire Retardant Chemical Technologies LLC.

CERTIFIED PRODUCT: FlameTech™**2A. CERTIFIED MODEL:** FlameTech Lumber

FlameTech Lumber is min. 2×4 in. nominal wood studs, spaced max. 16 in. oc, double top plates and single bottom plate fastened together with 16d common nails.

2B. CERTIFIED MODEL (Exterior): FlameTech Plywood

FlameTech Plywood, min. 15/32 in. thick, is applied vertically over the specified framing with min. 2-3/8 in. long, 0.113 in. diameter nails, spaced max. 8 in. oc around the perimeter and max. 12 in. oc in the field. Horizontal joints must be blocked.

3. **INSULATION:** Fiberglass batt insulation, min. 3-1/2 in. thick, R-13 friction fit between the studs. If 2×6 in. nominal wood studs are used, fiberglass batt insulation shall be min. 5-1/2 in. thick.

4. **EXTERIOR FACINGS:** Materials installed in accordance with manufacturer's installation instructions:

- 3/4 in. thick cement plaster (1:4 ratio of cement to sand for scratch coat and 1:5 ratio for brown coat)
- Nominal 2.7 in. thick solid brick fastened using min. 22 GA wall ties
- Nominal 2.3 in. thick hollow brick fastened using min. 22 GA wall ties

Fire Retardant Chemical Technologies LLC

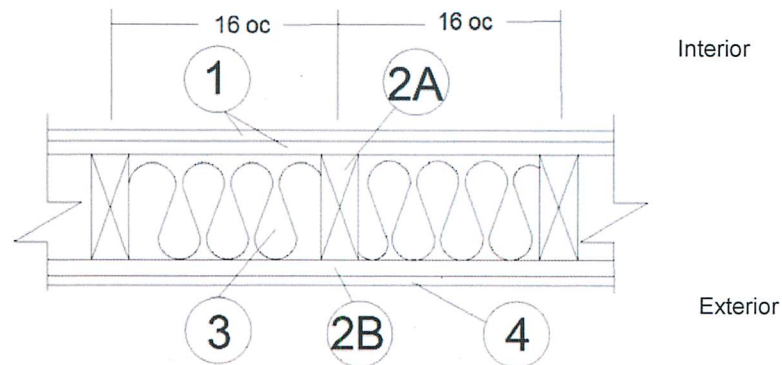
Design No. FRCT/FRWT 120-01

Fire Retardant Wood

FlameTech™ Lumber and Plywood

ASTM E119

Rating: 2 Hour Load Bearing (2015 NDS - F_c 0.96 for FRWT)
 Rated From One Side (Interior Side Only)



1. **GYPSUM BOARD (Interior):** Two layers Type C USG Firecode® C Core Type X or equivalent complying with ASTM C1396, min. 5/8 in. thick, 4 ft. wide applied vertically, fastened to framing. Face layer joints staggered with base layer and covered with paper tape and joint compound.

FASTENERS (Not Shown):

- A. **FACE LAYER** – Min. #6 × 2 in. long Type S or W screws spaced max. 8 in. on center (oc) and heads covered with joint compound.
- B. **BASE LAYER** – Min. #6 × 1-5/8 in. long Type S or W screws, spaced max. 6 in. oc.

2. **CERTIFIED MANUFACTURER:** Fire Retardant Chemical Technologies LLC.

CERTIFIED PRODUCT: FlameTech™**2A. CERTIFIED MODEL:** FlameTech Lumber

FlameTech Lumber is min. 2×4 in. nominal wood studs, spaced max. 16 in. oc, double top plates and single bottom plate fastened together with 16d common nails.

- 2B. **CERTIFIED MODEL (Exterior):** FlameTech Plywood

FlameTech Plywood, min. 15/32 in. thick, applied vertically over the specified framing with min. 2-3/8 in. long, 0.113 in. diameter nails, spaced max. 8 in. oc around the perimeter and max. 12 in. oc in the field. Horizontal joints must be blocked.

3. **INSULATION:** Fiberglass batt insulation min. 3-1/2 in. thick R-13 friction fit between the studs. If 2×6 in. nominal wood studs are used, fiberglass batt insulation shall be min. 5-1/2 in. thick.
4. **EXTERIOR FACINGS (Optional):** Materials installed in accordance with manufacturer's installation instructions:
- Masonry brick veneer or concrete
 - Portland cement or synthetic stucco systems with self-furring metal lath or adhesive base coat
 - Hardboard, wood structural panel, plywood, or fiber-cement siding
 - Metal siding
 - Vinyl siding – exterior plastic

Fire Retardant Chemical Technologies LLC

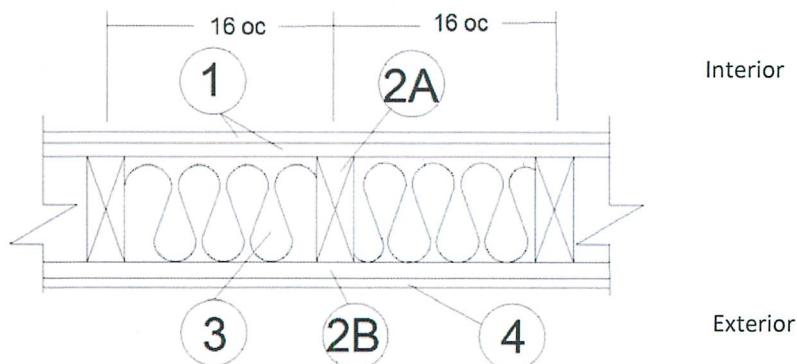
Design No. FRCT/FRWT 120-02

Fire Retardant Wood

FlameTech™ Lumber and Plywood

ASTM E119

Rating: 1 Hour Load Bearing from the Exterior and 2 Hour Load Bearing from the Interior
(2015 NDS - F_c 0.96 for FRWT)



- 1. GYPSUM BOARD (Interior):** Two layers USG Firecode® C Core, complying with ASTM C1396, or equivalent, min. 5/8 in. thick, 4 ft. wide applied vertically, fastened to framing. Face layer joints staggered with base layer and covered with paper tape and joint compound.

FASTENERS (Not Shown):

- A. FACE LAYER – Min. #6 × 2 in. long Type S or W screws spaced max. 8 in. on center (oc) and heads covered with joint compound.
B. BASE LAYER – Min. #6 × 1-5/8 in. long Type S or W screws, spaced max. 6 in. oc.

- 2. CERTIFIED MANUFACTURER:** Fire Retardant Chemical Technologies LLC.

CERTIFIED PRODUCT: FlameTech™**2A. CERTIFIED MODEL:** FlameTech Lumber

FlameTech Lumber is min. 2×4 in. nominal wood studs, spaced max. 16 in. oc, double top plates and single bottom plate fastened together with 16d common nails.

- 2B. CERTIFIED MODEL (Exterior):** FlameTech Plywood

FlameTech Plywood, min. 15/32 in. thick, applied vertically over the specified framing with min. 2-3/8 in. long, 0.113 in. diameter nails, spaced max. 8 in. oc around the perimeter and max. 12 in. oc in the field. Horizontal joints must be blocked.

- 3. INSULATION:** Fiberglass batt insulation min. 3-1/2 in. thick R-13 friction fit between the studs. If 2×6 in. nominal wood studs are used, fiberglass batt insulation shall be min. 5-1/2 in. thick.

- 4. EXTERIOR FACINGS:** Materials installed in accordance with manufacturer's installation instructions:

- 3/4 in. thick cement plaster (1:4 ratio of cement to sand for scratch coat and 1:5 ratio for brown coat)
- Nominal 2.7 in. thick solid brick fastened using min. 22 GA wall ties
- Nominal 2.3 in. thick hollow brick fastened using min. 22 GA wall ties